

PROJECT: 17BP.2.R.14 ID: SF-060126

STATE OF NORTH CAROLINA
DEPARTMENT OF TRANSPORTATION
DIVISION OF HIGHWAYS
GEOTECHNICAL ENGINEERING UNIT

STATE	STATE PROJECT REFERENCE NO.	SHEET	TOTAL
N.C.	SF-060126	1	6

CONTENTS

<u>SHEET</u>	<u>DESCRIPTION</u>
1	TITLE SHEET
2	LEGEND
3	SITE PLAN
4	PROFILE
5-6	BORE LOGS

STRUCTURE
SUBSURFACE INVESTIGATION

PROJ. REFERENCE NO. 17BP.2.R.14 (SF-060126) F.A. PROJ. _____
 COUNTY BEAUFORT
 PROJECT DESCRIPTION BRIDGE NO. 126 ON SR 1725 (PAMLICO BEACH RD.) OVER JORDAN CREEK AT -EL- STA. 12+15

CAUTION NOTICE

THE SUBSURFACE INFORMATION AND THE SUBSURFACE INVESTIGATION ON WHICH IT IS BASED WERE MADE FOR THE PURPOSE OF SITE PLANNING AND DESIGN AND NOT FOR CONSTRUCTION OR POST-CONSTRUCTION. THE VARIOUS FIELD BORING LOGS, ROCK CORES, AND SOIL TEST DATA AVAILABLE MAY BE REVIEWED BY CONTRACTOR IN ORDER TO CONDUCTING THE N.C. DEPARTMENT OF TRANSPORTATION, GEOTECHNICAL ENGINEERING UNIT AT 1700 SOUTH COLLETT STREET, RALEIGH, NORTH CAROLINA 27617. FOR THE FIELD BORING LOGS, ROCK CORES, OR SOIL TEST DATA ARE PART OF THE CONTRACT.

GENERAL SOIL AND ROCK STRATA DESCRIPTIONS AND INDICATED BOUNDARIES ARE BASED ON A GEOLOGICAL INTERPRETATION OF ALL AVAILABLE SUBSURFACE DATA AND MAY NOT NECESSARILY REFLECT THE ACTUAL SUBSURFACE CONDITIONS BETWEEN BOREHOLE OR BETWEEN SAMPLE SPACINGS WITHIN THE BOREHOLE. THE LABORATORY SAMPLE DATA AND THE IN SITU IN-PLACED TEST DATA CAN BE RELIED UPON ONLY TO THE DEGREE OF RELIABILITY INDICATED IN THE TESTING TEST METHOD. THE OBSERVED WATER LEVELS OR SOIL MOISTURE CONDITIONS INDICATED IN THE SUBSURFACE INVESTIGATIONS ARE AS RECORDED AT THE TIME OF THE INVESTIGATION. THESE WATER LEVELS OR SOIL MOISTURE CONDITIONS MAY VARY CONSIDERABLY WITH THE ACCORDING TO CLIMATIC CONDITIONS INCLUDING TEMPERATURES, PRECIPITATION, AND WIND, AS WELL AS OTHER NON-CLIMATIC FACTORS.

THE BUREAU OF CONTRACTOR IS CAUTIONED THAT DETAILS SHOWN ON THE SUBSURFACE PLANS ARE PRELIMINARY ONLY AND IN MANY CASES THE FINAL DESIGN DETAILS ARE DIFFERENT. FOR BORING AND CONSTRUCTION PURPOSES, REFER TO THE CONSTRUCTION PLANS AND DOCUMENTS FOR FINAL DESIGN INFORMATION OF THIS PROJECT. THE DEPARTMENT DOES NOT WARRANT OR GUARANTEE THE SUFFICIENCY OR ACCURACY OF THE INVESTIGATION MADE, NOR THE INTERPRETATION MADE, OR OPINION OF THE DEPARTMENT AS TO THE TYPE OF MATERIALS AND CONDITIONS TO BE ENCOUNTERED. THE BUREAU OF CONTRACTOR IS CAUTIONED TO MAKE SUCH INDEPENDENT SUBSURFACE INVESTIGATIONS AS HE DEEMS NECESSARY TO SAFELY COMPLY WITH THE CONDITIONS TO BE ENCOUNTERED ON THIS PROJECT. THE CONTRACTOR SHALL HAVE NO CLAIM FOR ADDITIONAL COMPENSATION OR FOR AN EXTENSION OF TIME FOR ANY DELAYS RESULTING FROM THE ACTUAL CONDITIONS ENCOUNTERED AT THE SITE DIFFERING FROM THOSE INDICATED IN THE SUBSURFACE INFORMATION.

PERSONNEL
C.M. WRIKKE

R.E. SMITH

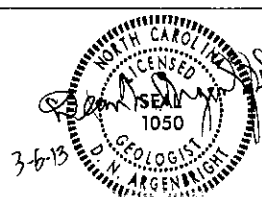
D.G. PENTER

INVESTIGATED BY **D.N. ARGENBRIGHT**

CHECKED BY **D.N. ARGENBRIGHT**

SUBMITTED BY **D.N. ARGENBRIGHT**

DATE **MARCH 2013**



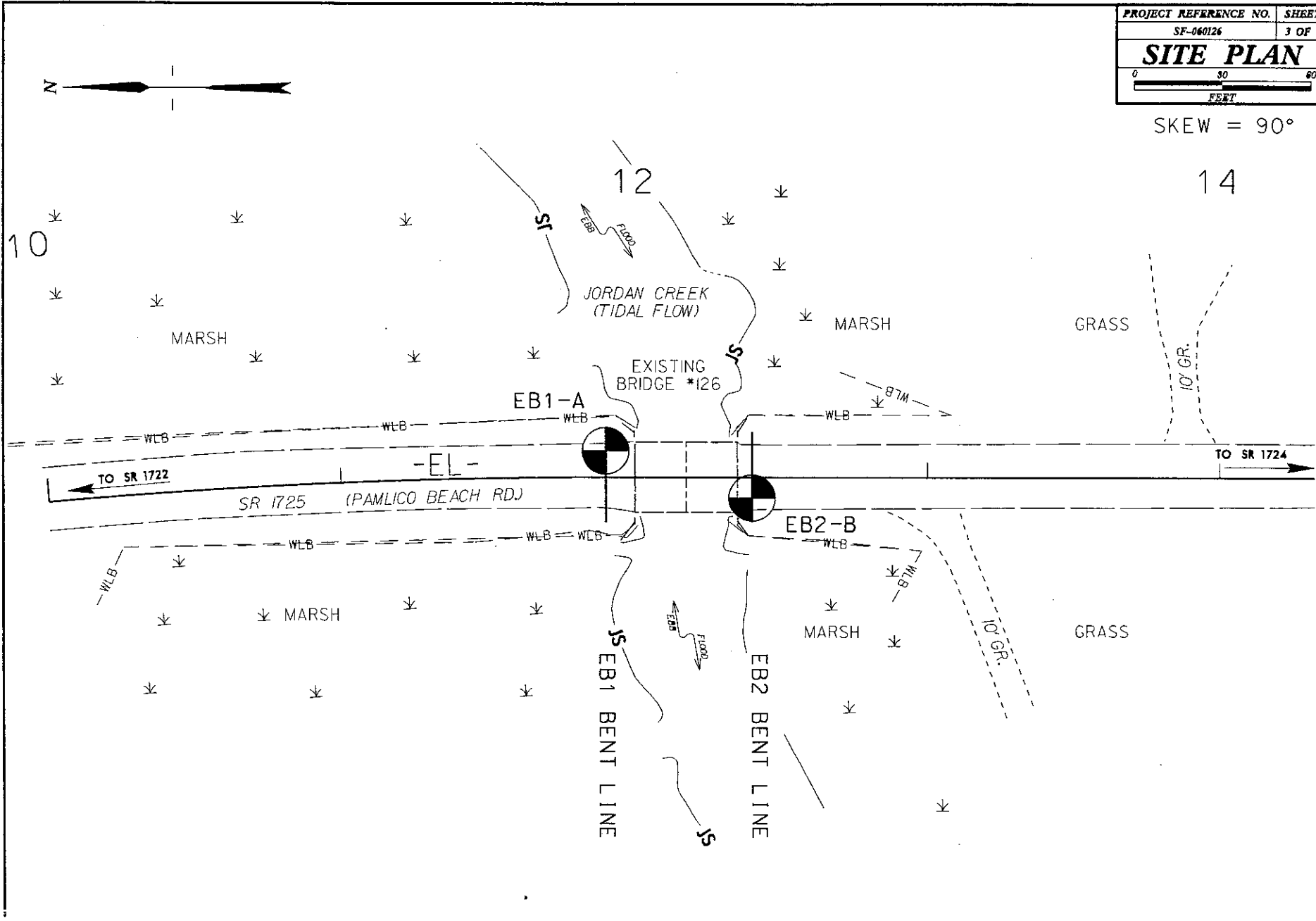
DRAWN BY: **C.P. TURNER**

NOTE - THE INFORMATION CONTAINED HEREIN IS NOT IMPLIED OR GUARANTEED BY THE N.C. DEPARTMENT OF TRANSPORTATION AS BEING ACCURATE. TIME IS CONSIDERED TO BE PART OF THE PLANS, SPECIFICATIONS, OR CONTRACT FOR THIS PROJECT.

NOTE - BY HAVING REQUESTED THIS INFORMATION, THE CONTRACTOR SPECIFICALLY WAIVES ANY CLAIMS FOR INCREASED COMPENSATION OR EXTENSION OF TIME BASED ON DIFFERENCES BETWEEN THE PROPOSED CONDITIONS SHOWN ON THE PLANS AND THE ACTUAL CONDITIONS ENCOUNTERED AT THE SITE.

PROJECT REFERENCE NO.	SHEET
SF-060126	3 OF 6
SITE PLAN	

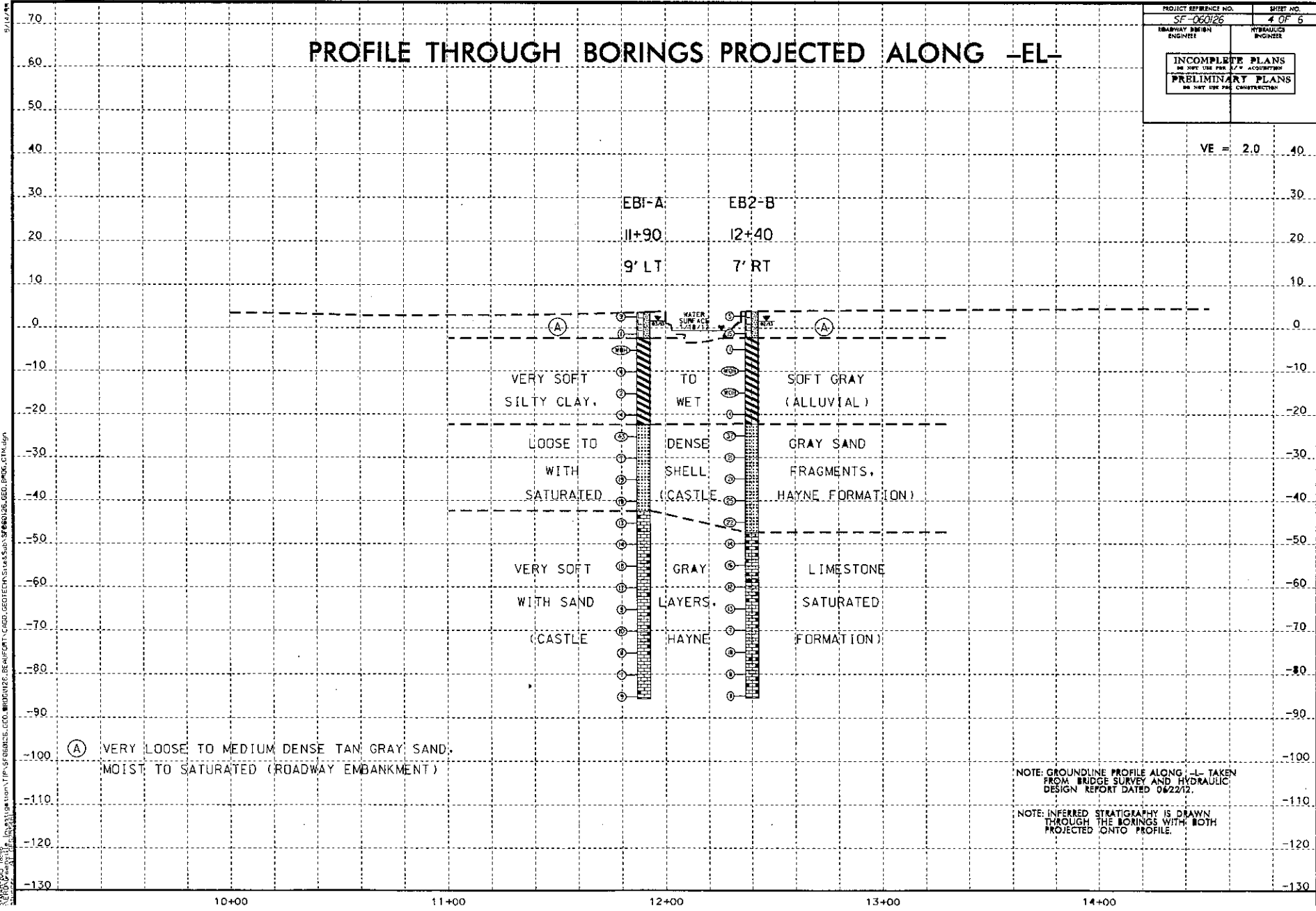
SKEW = 90°



PROJECT REFERENCE NO. SF-060126	SHEET NO. 4 OF 6
EMBAKMENT DESIGN ENGINEER	HYDRAULICS ENGINEER
INCOMPLETE PLANS DO NOT USE FOR CONSTRUCTION	

PROFILE THROUGH BORINGS PROJECTED ALONG -EL-

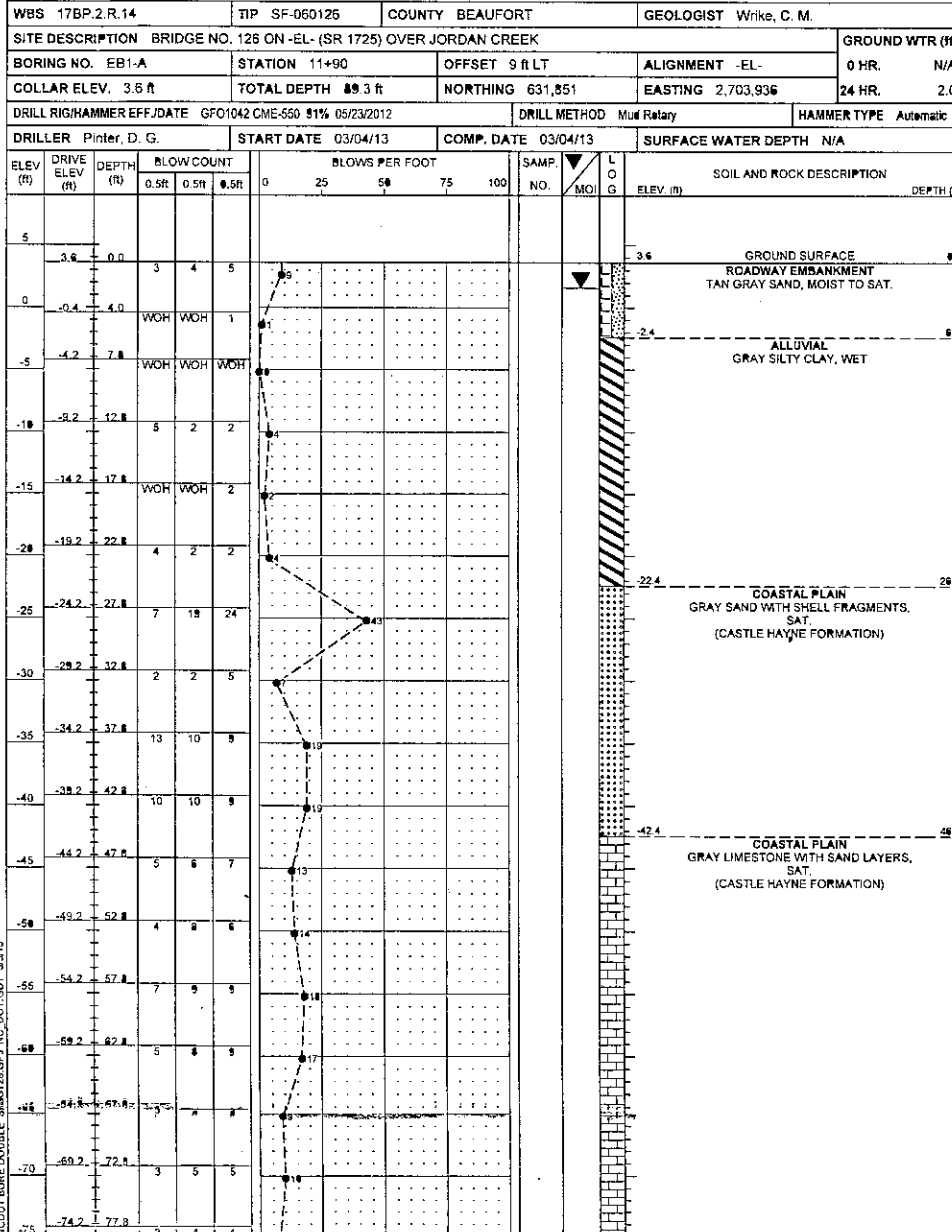
VE = 2.0 40



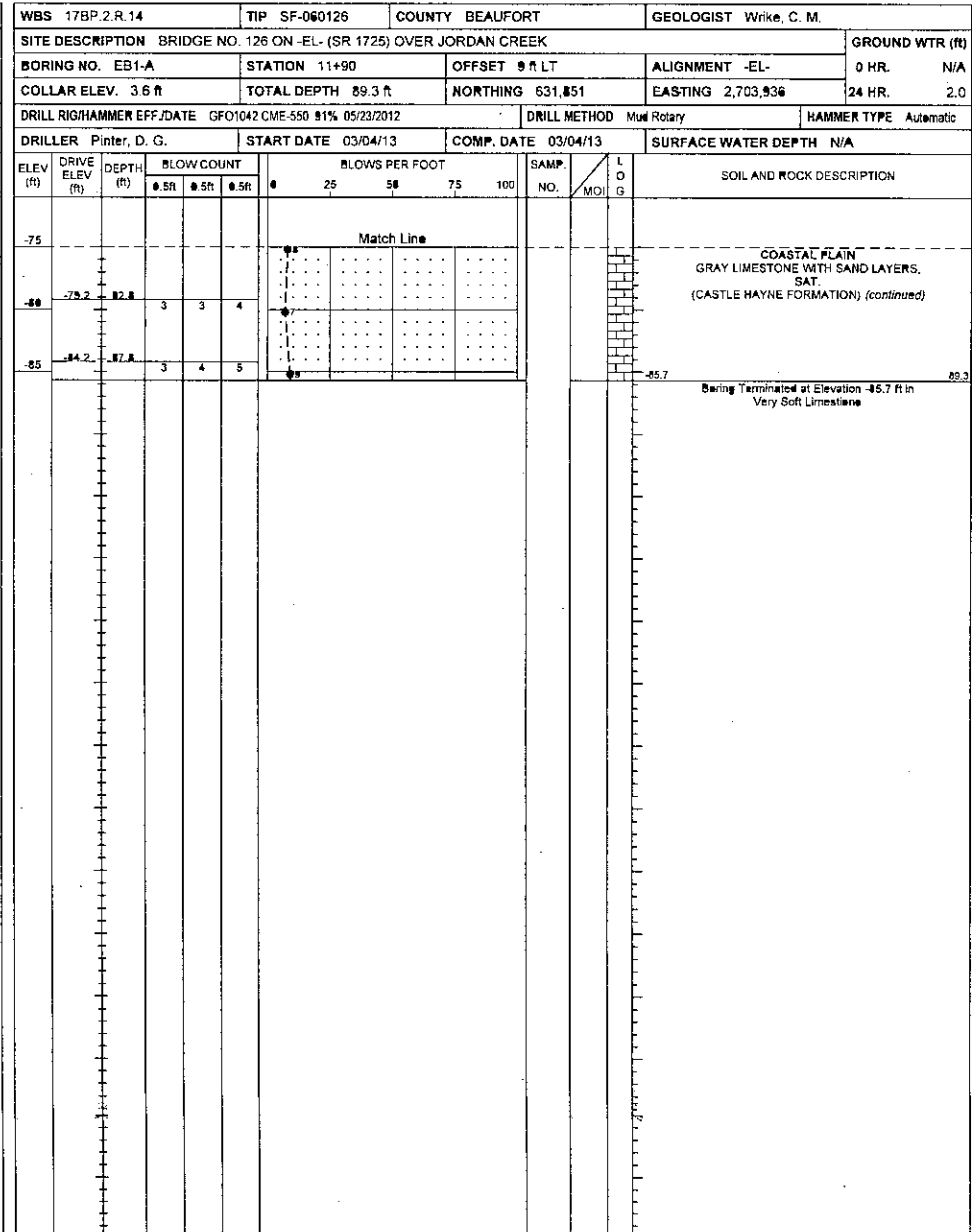
DATE: 03/16/12
 DRAWN BY: J. S. B. / CHECKED BY: J. S. B. / PROJECT: SF-060126-040
 PROJECT: SF-060126-040



NCDOT GEOTECHNICAL ENGINEERING UNIT
BORELOG REPORT

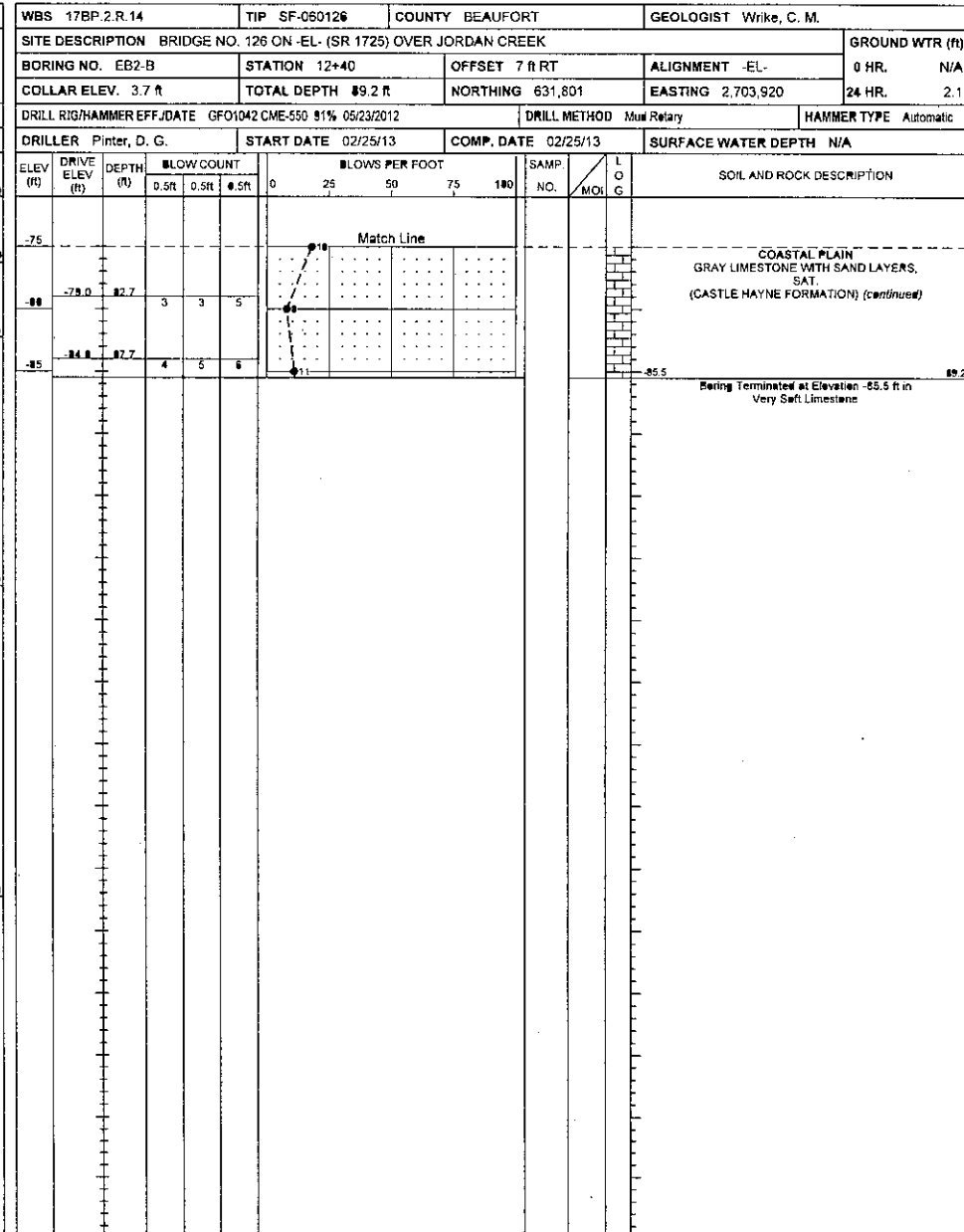
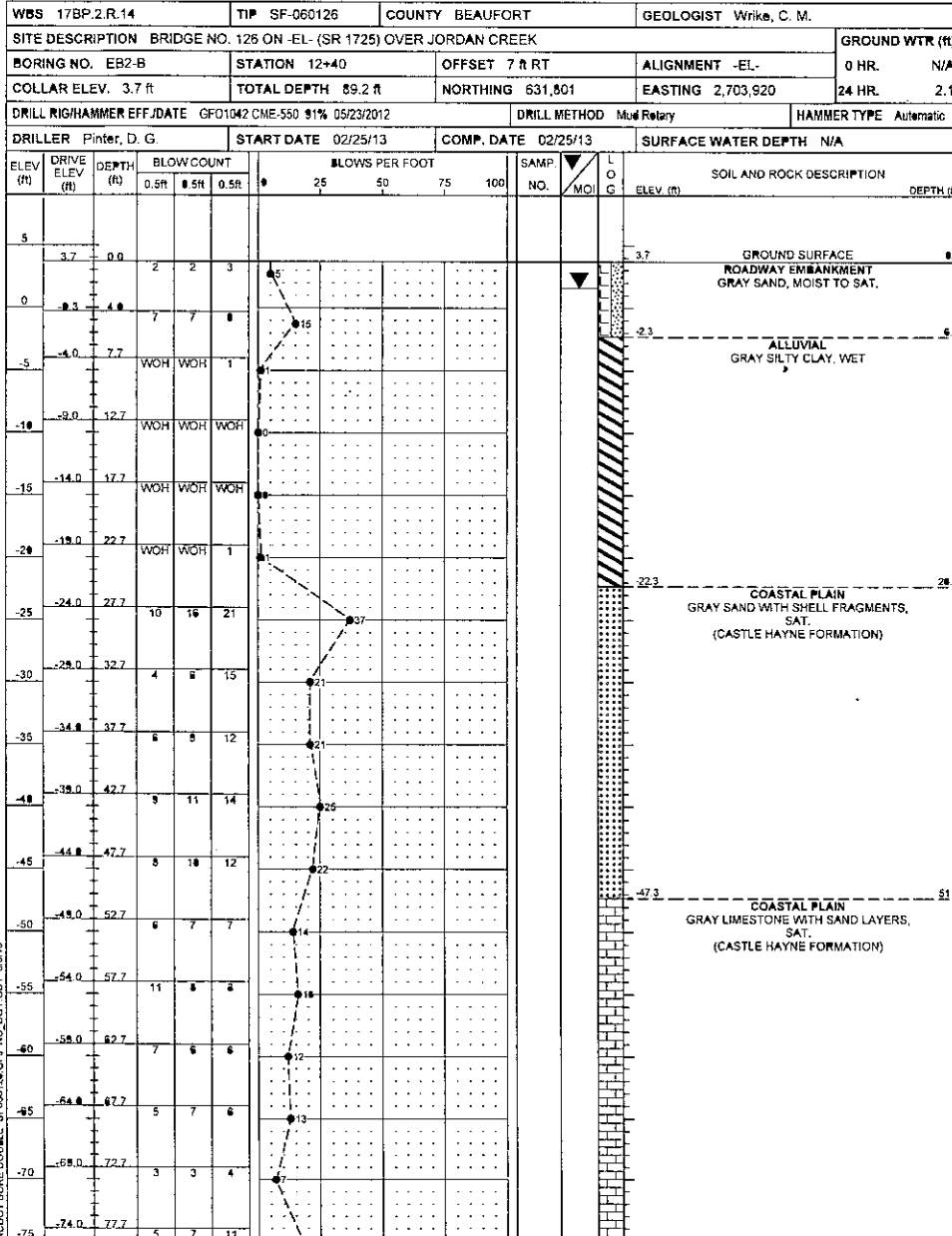


NCDOT BORING DOUBLE SPACING.GPJ NC_DOT_GDT_3/5/13





NCDOT GEOTECHNICAL ENGINEERING UNIT
BORELOG REPORT



NCDOT.CME.DRAWING.SP060126.GPJ, NCDOT.GDT, 3/5/13